



Capitol Area Council Functional Organization Chart

Jon C. Yates
Scout Executive/CEO

Leigh Wyatt
Executive Assistant

SE Executive Assistant
Council Board
Credit Card Checkout
Human Resources
Mail Log
Reception
Registrar
Supplies

Ron Settele
Director of Support Services

Program
Activities
Advancement
Camping
Training
Facility Operations
Access
Alarms/Surveillance
Vendor Management
Properties
Rangers
Scout Shop

Matthew Menely
Director of Endowment

Endowment
GLSR Credits
Grants
IT/PCs/Phones
Smilin V Development

Will Gregorcyk
ASE/CFO

Field Service
Development
Friends of Scouting
DCAL
Facility Rental
Popcorn
Sporting Clays
Tom Wooten Society
Finance
Accounting
Benefits/Payroll
Budget
Credit Card
Reconciliation
Deposits

Charles Mead
Marketing Director

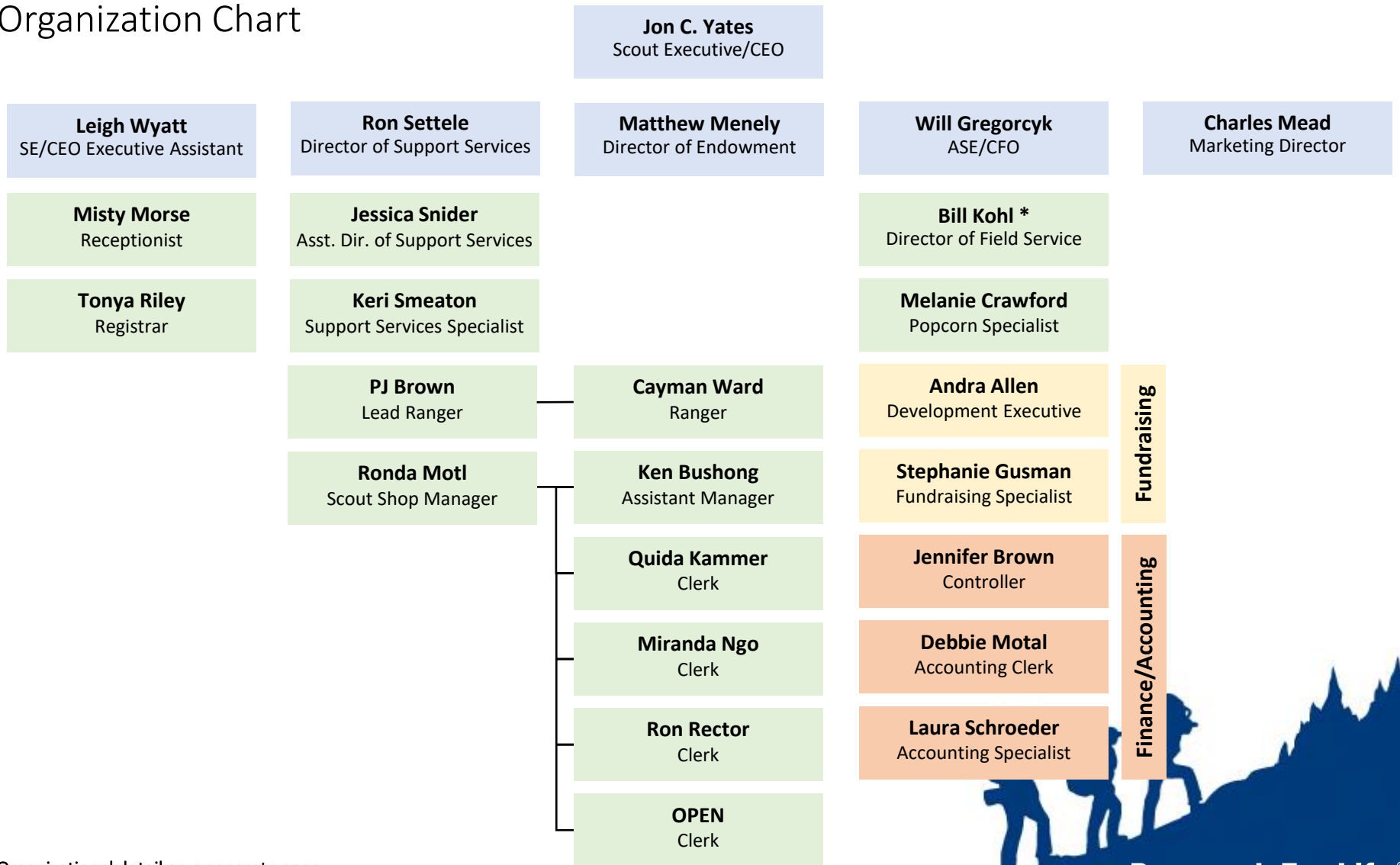
Council Spokesperson
Crisis Communications
Marketing
Newsletters
Online Donation Systems
Online Scout Shop
Public Relations
Social Media
Website Management





Capitol Area Council

Organization Chart



* Organizational detail on a separate page





Capitol Area Council

Field Service

Bill Kohl
Director of Field Service

Franetta Sinsabaugh
Community Executive

OPEN
Field Director (NSA)

Josette Crawford
Field Director (SSA)

Brandon Colmark
District Executive (BC)

Danielle Miller
District Executive (AR)

Matt Gregory
District Executive (BP)

Ed Grune
District Director (LO, SS)

Bruce Maulding
Community Executive (LO)

OPEN
District Executive (CT)

Scott Thomas
District Executive (TB)

District Associates
Sacred Springs District

Curtis Chandler
Community Executive (CR)

Paola Rodriguez
District Executive (WL)

District Associates
Waterloo District

Andrew Lowenthal
Community Executive (HC)

Ariana Contreras
District Executive (EX)

Adam Stackhouse
Community Executive (HC)

Justin Brundin
District Executive (NS)

Andrew Jones
District Executive (SG)

